

Light

AAK EH LOW SB

AAKEH

Comfortable wide-fitting sneaker style with EH function

Light like space, strong like a rock. Our lightweight AAK EH LOW safety sneakers are completely metal free, with a puncture-resistant lightweight midsole and a composite toe cap. They feature EH protection, a slip-resistant rubber outsole and breathable upper. AAK offers an extra wide fitting and is suitable for light applications in dry environments.

Upper	Textile
Lining	Mesh
Footbed	SJ foam footbed
Midsole	Textile
Outsole	Phylon/Rubber (NBR)
Toecap	Composite
Category	SB / PS, SR, E, FO, HRO
Size range	EU 35-48 / UK 3.0-13.0 / US 3.0-13.5 JPN 21.5-31.5 / KOR 230-315
Norms	ASTM F2413:2018 EN ISO 20345:2022



Electrical hazard (EH)

Electrical hazard (EH) rated safety shoes have nonconductive outsoles. As a secondary source of protection they reduce the potential for electric shocks under dry conditions.



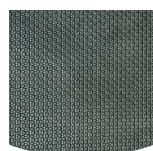
Slip resistance (SR)

Replaces the previously used term of SRA+SRB=SRC. SR means the slip test has been executed on tiles contaminated with soap and with oil.



Composite toecap

Metalfree and lightweight, no thermal or electrical conductivity



Rubber outsole

Rubber outsoles provide versatile functions that make them suitable for many areas of application: excellent cut resistance, heat and cold resistance, high flexibility at cold temperatures, resistance against oil, fuel and many chemicals.



Puncture resistant lightweight

Metal free, super flexible and ultralight puncture resistant midsole. Covers 100% of the bottom area of the last, no thermal conductivity.



BLK

Industries:

Assembly, Automotive, Industry, Logistics

Environments:

Dry environment, Extreme slippery surfaces

Maintenance instructions:

To extend the life of your shoes, we recommend to clean them regularly and to protect them with adequate products. Do not dry your shoes on a radiator, nor nearby a heat source.

	Description	Measure unit	Result	EN ISO 20345
Upper	Textile			
	Upper: permeability to water vapor	mg/cm²/h	1.2	≥ 0.8
	Upper: water vapor coefficient	mg/cm²	21	≥ 15
Lining	Mesh			
	Lining: permeability to water vapor	mg/cm²/h	34.59	≥ 2
	Lining: water vapor coefficient	mg/cm²	277	≥ 20
Footbed	SJ foam footbed			
	Footbed: abrasion resistance (dry/wet) (cycles)	cycles	Dry 25600 cycles/Wet 12800 cycles	25600/12800
Outsole	Phylon/Rubber (NBR)			
	Outsole abrasion resistance (volume loss)	mm³	119.4mm³(Density:1.3)	≤ 150
	Basic Slip resistance - Ceramic + NaLS - Forward heel slip	friction	0.48	≥ 0.31
	Basic Slip resistance - Ceramic + NaLS - Backward forepart slip	friction	0.48	≥ 0.36
	SR Slip resistance - Ceramic + glycerin - Forward heel slip	friction	0.36	≥ 0.19
	SR Slip resistance - Ceramic + glycerin - Backward forepart slip	friction	0.36	≥ 0.22
	Antistatic value	MegaOhm	N/A	0.1 - 1000
	ESD value	MegaOhm	N/A	0.1 - 100
	Heel energy absorption	J	25	≥ 20
Toecap	Composite			
	Impact resistance toecap (clearance after impact 100J)	mm	N/A	N/A
	Compression resistance toecap (clearance after compression 10kN)	mm	N/A	N/A
	Impact resistance toecap (clearance after impact 200J)	mm	16.0	≥ 14
	Compression resistance toecap (clearance after compression 15kN)	mm	22.0	≥ 14

Sample size:

Our shoes are constantly evolving, the technical data above may change. All product names and brand Safety Jogger, are registered and may not be used or reproduced in any format, without written consent from us.



Solutions for every workplace

INDUSTRIAL PROFESSIONAL TACTICAL TIGER GRIP

ENGINEERED
IN EUROPE

www.safetyjogger.com