

Medium

RENA EH SB

RENAEH

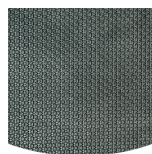
The comfortable all-round safety shoe

Safety Jogger's RENA EH safety shoe is a all-round safety shoe offering SR slip resistance, heat-resistance up to 300°C, and electrical hazard protection. With a rubber outsole and multiple safety features, it's suitable for various industries.

| | |
|---------------|---|
| Lining | Mesh |
| Footbed | SJ foam footbed |
| Toecap | Composite |
| Category | SB / WRU, P, SRC, E, HI, CI, FO, HRO, EH |
| Size range | EU 35-48 / UK 3.0-13.0 / US 3.0-13.5 JPN 21.5-31.5 / KOR 230-315 |
| Sample weight | 0.650 kg |
| Norms | ASTM F2413:2018 EN ISO 20345:2011 |



BLK



Rubber outsole

Rubber outsoles provide versatile functions that make them suitable for many areas of application: excellent cut resistance, heat and cold resistance, high flexibility at cold temperatures, resistance against oil, fuel and many chemicals.



Heat resistant outsole (HRO)

The outsole resists high temperatures up to 300°C.



SRC slip resistance

Slip resistant soles are one of the most important features of safety and occupational footwear. SRC slip resistant soles pass both SRA and SRB slip resistant tests, they are tested on both steel and ceramic surfaces.



Electrical hazard (EH)

Electrical hazard (EH) rated safety shoes have nonconductive outsoles. As a secondary source of protection they reduce the potential for electric shocks under dry conditions.

Industries:

Automotive, Chemical, Cleaning, Food & beverages, Logistics, Oil & Gas

Environments:

Warm surfaces, Cold environment, Extreme slippery surfaces

Maintenance instructions:

To extend the life of your shoes, we recommend to clean them regularly and to protect them with adequate products. Do not dry your shoes on a radiator, nor nearby a heat source.

| | Description | Measure unit | Result | EN ISO 20345 |
|---------|--|--------------|-------------|--------------|
| Lining | Mesh | | | |
| | Lining: permeability to water vapor | mg/cm²/h | 59.5 | ≥ 2 |
| | Lining: water vapor coefficient | mg/cm² | 480 | ≥ 20 |
| Footbed | SJ foam footbed | | | |
| | Footbed: abrasion resistance (dry/wet) (cycles) | cycles | 25600/12800 | 25600/12800 |
| Toecap | Composite | | | |
| | Impact resistance toecap (clearance after impact 100J) | mm | N/A | N/A |
| | Compression resistance toecap (clearance after compression 10kN) | mm | N/A | N/A |
| | Impact resistance toecap (clearance after impact 200J) | mm | 20.5 | ≥ 14 |
| | Compression resistance toecap (clearance after compression 15kN) | mm | 25 | ≥ 14 |

Sample size: 42

Our shoes are constantly evolving, the technical data above may change. All product names and brand Safety Jogger, are registered and may not be used or reproduced in any format, without written consent from us.



Solutions for every workplace

INDUSTRIAL PROFESSIONAL TACTICAL TIGER GRIP



www.safetyjogger.com